


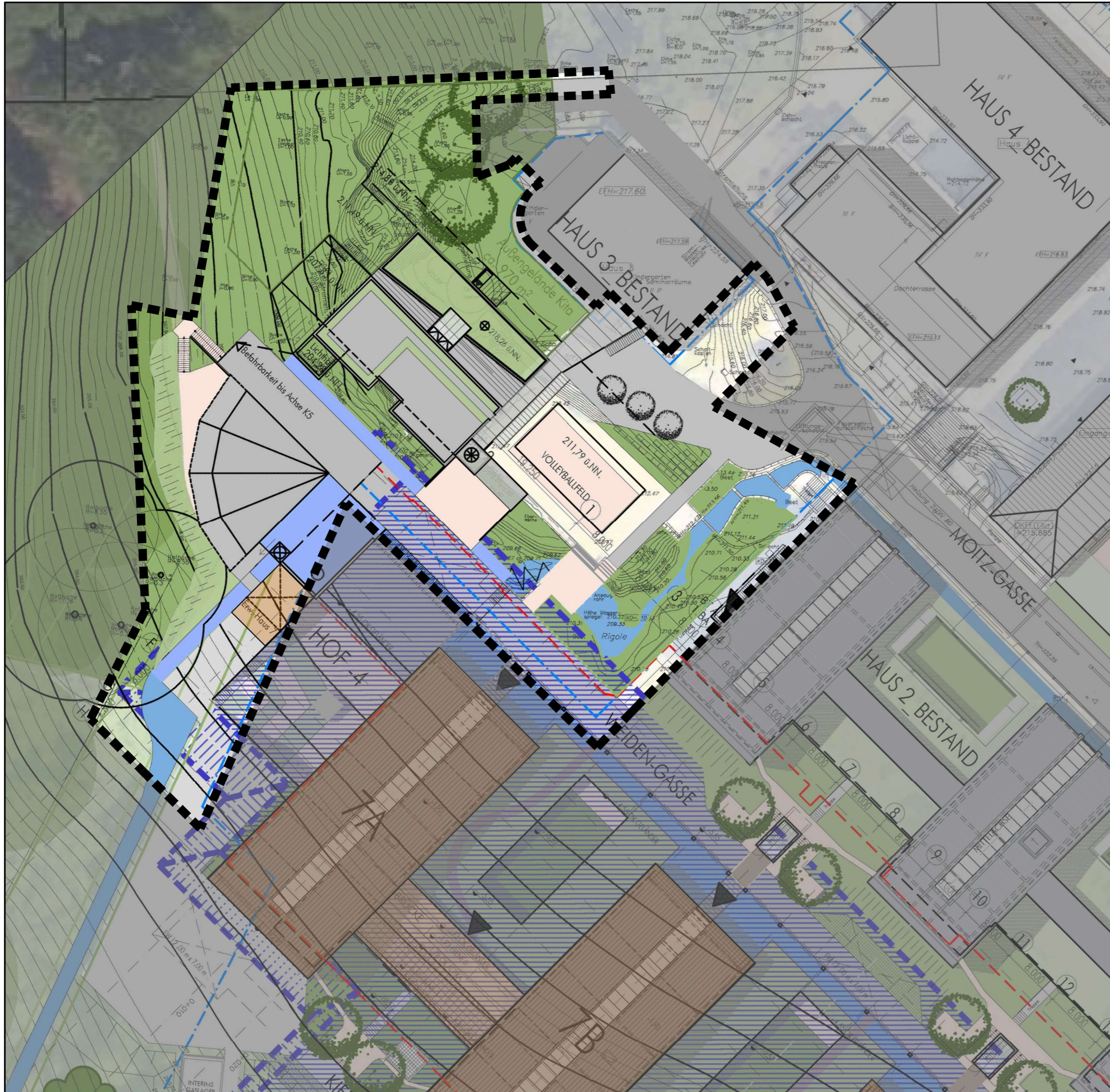


Legende

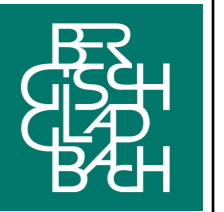
-  Bestand
-  in Planung / im Bau befindliche Gebäude
-  Geltungsbereich 1. Änderung



1. Änderung
Bebauungsplan Nr. 5583 "Bockenbergr 2"

Lageplan

H+B Stadtplanung
 Beele und Haase PartG mbB
 Kunibertsloster 7-9
 50668 Köln
 Tel. 0221 952 686 33 .
 Fax 0221 899 941 32
 post@hb-stadtplanung.de



Stand: Oktober 2020
Maßstab 1:500

